



PATHOS  
THE UNORTHODOX APPROACH

INPOLREMIX MKII





*There is no better way to listen to music*

# PATHOS

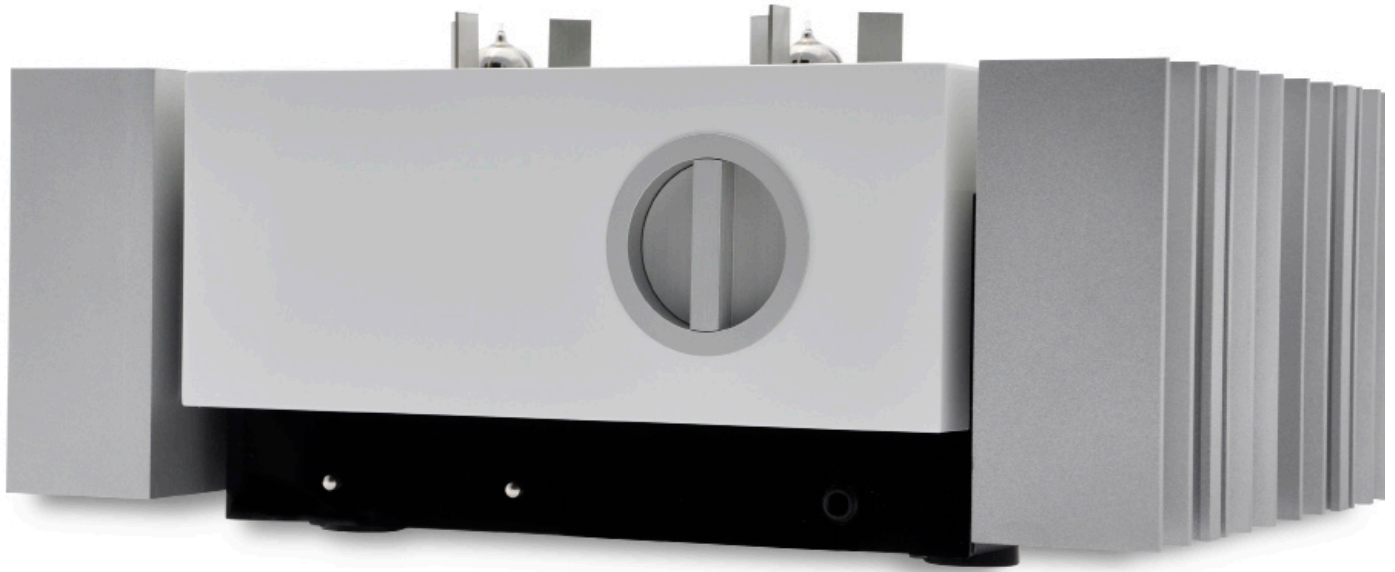


InPol ("Inseguitore Pompa Lineare" - Linear Pump Follower) is a system patented by Pathos Acoustics which has enjoyed great success and won many awards. InPol devices have a special sonic personality obtainable only by means of this particular circuit design - fully balanced in Class A using a single solid state component in follower configuration, with high current gain and with voltage gain together. The valve amplifier amplifies the input signal voltage and InPol supplies the current to drive the loudspeakers without any further amplification. In this way the signal is entrusted to the valves and becomes a true copy of the original, with all the quality, purity and harmonic content of the original.

This technology allows an increase in the theoretical output in pure Class A of between 25% and 50% together with a low output impedance which is fundamental for the damping factor, and further improved by the double InPol.

InPolRemix MkII is a fully-balanced pure Class A integrated amplifier using the latest generation double-InPol circuitry.

The digital bias/gain set technology with intelligent control is entrusted to the same microprocessor which regulates the volume, thus guaranteeing the performance of the amplifier itself and its ability to drive the loudspeakers efficiently.



## INPOLREMIX<sub>MKII</sub>

Thanks to the (optional) HiDac Mk2 converter, music lovers who want the best from the latest digital sources will find their demands fully met.

The elegant appearance design inherited from the ClassicRemix, with its compact dimensions make this a piece of audio equipment unique in its class. The central part of the chassis is carefully finished, while the lateral heatsinks, shaped to form the maker's logo, make a strikingly attractive statement and serve to highlight the carefully protected valves placed in the centre of the chassis.



InPolRemix MkII is available in various colours and personal choices of finish. InPolRemix raises the musical listening experience to the highest level, thanks to Pathos' audio design and engineering, and the use of components of the highest quality.

# PATHOS

THE UNORTHODOX APPROACH

Pathos Acoustics  
Via Palù 50/52  
36040 Grumolo delle Abbadesse  
Italy  
[www.pathosacoustics.com](http://www.pathosacoustics.com)

The manufacturer reserves the right to introduce technical and external modifications without prior notice.

Pathos is a registered trademark.  
Copyright Pathos Acoustics.  
All Rights reserved.



## Main Specifications

Type:

Stereo integrated amplifier Pure class A - double INPOL technology - fully balanced - digital Bias/gain set technology

Output power

2 x 25W@ 8 Ohm, 2 x 38W@ 4 Ohm

Frequency response

2Hz – 150KHz ± 0.5db

Input sensitivity

470mV<sub>RMS</sub>

Input impedance

7KOhm

Output polarity

Selectable by remote control

Volume regulator

2 x Burr Brown PGA2310 (180 steps 0,5dB)

THD:

0,1% @ 25W

S/N Ratio:

> 100dB

Gain

31 db Unbalanced

Output impedance

0,9Ω

## Connections

Analogue inputs

1 Balanced XRL line,  
4 unbalanced RCA line Installation of (optional) HiDac Mk2 board is required to enable these inputs

Digital inputs:

1 USB port type "B", 1 SPDIF coaxial,  
1 SPDIF optical

Outputs:

1 Pre out stereo line RCA  
1 Pre out stereo line Balanced XLR  
Pre-output phase can be selected  
1 connector for jack headphone 6,3mm

## Headphone specifications:

Output power

2,65W @ 32 Ω

Output impedance

0,45Ω

Max output level

9,6 V<sub>RMS</sub>

Frequency response

2Hz - 400KHz ± 0,5db

THD

0,025%

Dimensions:

370mm (D) x 280mm (W) x 170mm (H)

Weight:

12Kg