

Raidho Acoustics



“Where words fail,
music speaks”

HANS CHRISTIAN ANDERSEN





Raidho - For the Journey

In Denmark, exploring is in our blood. Our ancestors built ships – and what ships they were. Sailed across the widest seas to undiscovered lands, horizons were for expanding, corners for turning, chasms for crossing...

These days that spirit of adventure is alive and well, embodied in innovative Danish design and iconic products. It's in our DNA. At Raidho we too follow our dreams and our hearts: what our ancestors brought to geography we bring to the art of recorded sound. They built ships previously undreamt of: we build speakers that make music a living, breathing, thing. Beyond the facts of the sound, beyond the technological horizon, that's where you find the essence of the performance, the emotions it stirs, the reactions it conjures. That's what we seek and where we seek to take you.

We do it by using new technologies and innovative materials, blue-sky thinking and a lot of experience.

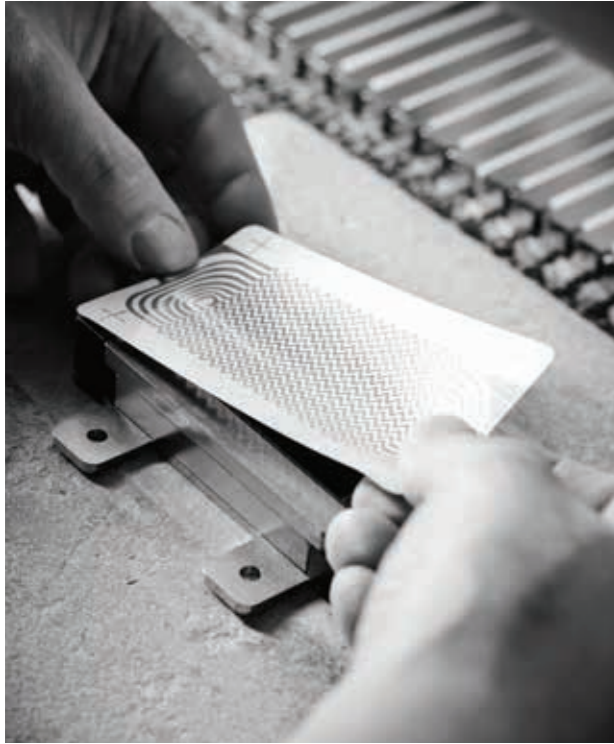
We make our own drivers and components – because nobody else does it the way we want.

We build everything in-house – because the devil is in the details (and there's a little bit of devil in every Dane).

We build speakers with boat-shaped cabinets – speakers that stand bold and stark, like masts against the sky.

The result is a range of products that are anything but ordinary; they don't look – work – or sound like other speakers. It's what makes them special. It's what makes the music they make simply extraordinary. Take them on your journey and you'll experience extraordinary too.





RAIDHO RIBBON TWEETER

Our proprietary, trademark ribbon tweeter is a unique design, entirely developed and built in-house at Raidho. The aim was to exceed the performance of conventional dome tweeters by reducing mass and increasing transient response. To achieve that we use an incredibly thin membrane that weighs only 0.02 grams, with a voice coil etched directly onto its surface, eliminating not just the peripheral voice-coil used in conventional designs but its former too. Anchored in a strong magnetic field, because the diaphragm is driven across its entire area, its resonance no longer needs to be controlled mechanically, giving a lighter structure. The low moving mass doesn't just make the diaphragm easier to control and accelerate. Its low stored energy further reduces colouration, while the precision machined wave-guide provides perfect, controlled dispersion. The result is natural, quick, clean high frequencies devoid of slurring, ringing or overhang. The result is more music, more of the time – and a lot less fatigue.

For the TD-series, we looked at how we could improve the tweeter to match the new drivers. A redesign of the magnets, waveguide and rear panel to optimize airflow, helped us to raise the sensitivity by 3 dB, and reducing the already low levels of distortion by 35 dB. This raised the level of performance further, making our worldclass tweeter ready for the future.



RAIDHO CERAMIX SANDWICH CONE TECHNOLOGY

Raidho's Ceramix cones are a unique solution to the conflicting demands of superior driver performance. Cone drivers need to be light and stiff (so that they react quickly and they don't break up within their pass-band) but also well-damped so that they don't ring and colour the sound. Conventional ceramic cones are certainly light, but they are also highly resonant. Raidho's Ceramix technology starts with a thin, aluminium cone and then uses a liquid plasma process and incredibly high-voltages to transform the outer skin of the metal to aluminium-oxide ceramic. It's a time-consuming and costly process, but the finished cone is a unique, natural sandwich, with thin, stiff skins on either side of a 'softer' aluminium core, creating a structure that is stiffer than a pure ceramic cone but with excellent self-damping. By carefully controlling the ratio of ceramic material to core depth, we can also tailor the driver's response, creating dedicated drive units whose genuinely cutting edge performance eclipses other technologies and approaches. But as impressive as it is, the Ceramix sandwich cone is only the starting point, with second-generation Raidho drivers (the D and XT series units) adding additional skins to advance performance even further. Raidho mid and bass units might look conventional, yet they are anything but – as their musical performance makes only too clear.



RAIDHO OPENPLAN MOTOR ARCHITECTURE

Building a driver fast enough to blend seamlessly with the Raidho ribbon tweeter demands more than a light, stiff, low-colouration cone. That cone needs to have a powerful, responsive motor driving it. One look at the segmented motor structure of a Raidho drive unit makes it obvious just what a radical departure from convention it represents. Difficult and demanding to build, the use of a spaced, radial array of magnets, surrounding the open voice-coil offers significant performance advantages. It allows us to employ spaced pairs of small but extremely strong neodymium magnets, creating an underhung, push-pull motor system with many times the power that can be produced with large, annular parts. But the open structure also improves venting and cooling of the motor assembly, reducing dynamic compression and back pressure, making for a more responsive, faster driver and one that can handle sustained musical peaks. So, when the musical signal says jump, a Raidho driver doesn't just ask how high, it asks for how long, too. The result is unprecedented dynamic tracking, preserving the smallest musical nuances and widest orchestral climaxes, delivering recorded music with levels of intimacy and dynamic contrast that you'll only previously have heard live.



RAIDHO CLAMPED CABINET CONSTRUCTION

We use the term 'loudspeaker system' for a reason. The best drivers in the world are only as good as the cabinet they're built into. At Raidho we go to extraordinary lengths to ensure that our enclosures contribute as little as possible to proceedings. The drive units are built directly onto the rear of the carefully profiled, machined aluminium baffles, eliminating the mechanical discontinuities introduced by a conventional driver basket at this critical junction. The braced, thin wall enclosures are formed with curved walls to maximise stiffness and minimize stored energy. They are then securely clamped between the baffle and the substantial spine element, creating a constrained structure, constructed from differential materials to maximise damping, without using high-mass or absorbent materials that store energy and rob the system of life and resolution. By efficiently converting spurious energy to heat, the clamped cabinet minimizes intermodulation distortion and maximizes system clarity and articulation, goals that are reinforced by building the capacitors and inductors used in our crossovers in-house, with special emphasis on their mechanical stability. At Raidho, we go to great lengths to build cabinets and crossovers that you won't hear, so that crystal clear music is what you will hear.



RAIDHO TD "TURBINE" MOTOR ARCHITECTURE

For the new TD-series, we decided to raise the bar and we realized that we needed to push the boundaries further in our technology. An old idea about a different design was brought to life and from the minds of our design team, simulations and trials turned into our new, turbine-shaped motor system.

The goal was to create a driver with higher sensitivity, but also to eliminate all kinds of distortion. This was done with a design that more than anything is focused around aerodynamics. Looking at the driver it is very obvious that airflow was a priority, and the design is all about smoothening the edges, shaping the magnet system and adding as little as possible material to the design to allow the driver to move as much air as possible while at the same time having as little as possible influences that could cause distortion and break-ups.

The patent pending driver design is built around an extremely powerful magnet system based on four neodymium magnets, our own proprietary edge wound voice coil and the Tantalum-Diamond cone. Compared to our OpenPlan driver, the TD-driver is more than twice as strong, and the driver is one of the strongest, underhung systems in the world with 1.1 tesla in the gap. In this small masterpiece, we have built in a magnetic brake, preventing the driver to destroy itself in case of too much power handling.

The result is everything, we hoped for, and more. The drivers are extremely dynamic, and with a remarkably higher sensitivity, they are easy to match in our speaker designs. The measurements are nothing less but extraordinary good with practically no distortion anywhere. This is also audible, and when you listen to a TD-series speaker, you will experience a sound that is extremely transparent and dynamic, revealing layers upon layers of music and taking you on a journey like no other speaker. The TD-drivers is not only about hi-fi, but also about music, and these new gems are the pinnacle of our musical testament.



X/XT Series

One look – two distinct product ranges; trickle down and cutting edge evolution in a single platform, the X series represents Raidho's most affordable range while the XT speakers are, in some ways, our most technologically sophisticated.

For any high technology design company, the challenge is always to make products more affordable while maintaining performance. In the X Series the challenge was to reduce the cost without compromising the technology. The first, obvious step was to use a single size of driver, rather than the dedicated different diameter units used in our C series. By designing the entire X series around multiple 100mm drivers, we were able to maximise the economies of scale while retaining a genuine Ceramix three-layer sandwich cone and OpenPlan motor architecture, essential if the mid and bass elements in the speaker were going to keep pace with the Raidho ribbon planar tweeter.

A smaller cabinet with a smaller footprint inevitably means trading efficiency against bandwidth – but it also means the opportunity to create a simpler, stiffer and less costly structure. The elongated wing shape, curved side panels and internal bracing mean that we can approach the performance of the C series clamped cabinet, with its constrained, self-damped structure, simply by exploiting the smaller volume, turning a compromise to our advantage. Similar economies of scale have allowed us to use moulded reflex ports, carefully profiled and segmented to control turbulence and dispersion and maintain crossover component quality. The result is an object lesson in value engineering. The result is the X series – true Raidho performance for real-world systems.

*“The notes I handle no better than many pianists.
But the pauses between the notes – Ah, that is where
the art resides.”*



X1

State-of-the art two-way mini-monitor, the X-1/ XT1 brings Raidho definition, resolution and dynamics to the smallest practical enclosure, creating a speaker and a musical performance that defy its diminutive dimensions. Comfortable close to the wall, it's as impressive near-field or from further away.

Available as XT1 with titanium-drivers at an additional cost – consult your local dealer.

| | |
|-------------------|---|
| Topology | 2 way |
| Bass Loading | Internal vented design. Port in front |
| Drivers | 1 x Raidho Ribbon Tweeter 1 x 5" Raidho Ceramix driver |
| Crossover Point | 3,5 KHz 2nd Order |
| Frequency Range | 80Hz - 50 kHz |
| Sensitivity | 88dB |
| Nominal Impedance | 6 Ohm |
| Power Requirement | 50 -125 Watts |
| Finishes | Piano Black or any colour to order |
| Dimensions | 143 x 310 x 230 mm |
| Footprint | 143 x 230 mm |
| Weight | 8 kg |



X2

A compact floor-standing speaker whose elegant lines conceal the ability to generate real musical power. Enough bass to satisfy, not so much that it gets into trouble and an easy load for partnering electronics, the X2 / XT2 is both an outstanding and a truly versatile performer.

Available as XT2 with titanium-drivers at an additional cost – consult your local dealer.

| | |
|-------------------|--|
| Topology | 2,5 way |
| Bass Loading | Internal vented design. Port in rear |
| Drivers | 1 x Raidho Ribbon Tweeter 2 x 5" Raidho Ceramix midbass |
| Crossover Point | 220Hz and 3.5 kHz 2nd Order |
| Frequency Range | 60Hz - 50 kHz |
| Sensitivity | 88dB |
| Nominal Impedance | 6 Ohm |
| Power Requirement | 50 -150 Watts |
| Finishes | Piano Black, Birdseye maple or any colour to order |
| Dimensions | 143 x 1060 x 410 mm (With feet 300 x 470) |
| Footprint | 300 x 410 mm |
| Weight | 23 kg |



X3

There's more to the slim, three-way X3 / XT3 than meets the eye, with the four forward firing mid and bass-mid drivers underpinned by a sideways-firing 8" aluminium coned sub-bass unit. Speed, dynamics, scale and slam, despite the slender appearance.

Available as XT3 with titanium-drivers at an additional cost – consult your local dealer.

| | |
|-------------------|---|
| Topology | 3 Way |
| Bass Loading | Internal vented design. Port in front |
| Drivers | 1x Raidho Ribbon Tweeter 2 x 5" Raidho Ceramix midbass 2 x 5"Raidho Ceramic bass 1 x 8" Aluconed bass driver |
| Crossover Point | 180Hz and 3.5 kHz 2nd Order |
| Frequency Range | 35Hz 50 kHz |
| Sensitivity | 88dB |
| Nominal Impedance | 6 Ohm |
| Power Requirement | 100 - 250 Watts |
| Finishes | Piano Black or any colour to order |
| Dimensions | 143 x 1270 x 410 mm (With feet 300 x 470) |
| Footprint | 143 x 410 mm |
| Weight | 40 kg |



X5

The most affordable full-range Raidho speaker that's built entirely with in-house drivers, the X5 / XT5 sounds as striking as it looks. Astonishing scale, drama, weight and impact, but above all, absolute coherence – and a musical performance as rare as the exotic Birdseye Maple Burl veneer.

Available as XT5 with titanium-drivers at an additional cost – consult your local dealer.

| | |
|-------------------|---|
| Topology | 3 Way |
| Bass Loading | Internal vented design. Port in back |
| Drivers | 1 x Raidho Ribbon Tweeter 2 x 5" Raidho Ceramix midrange 4 x 5" Raidho Ceramic bass |
| Crossover Point | 180Hz and 3.5 kHz 2nd Order |
| Frequency Range | 33Hz 50 kHz |
| Sensitivity | 90dB |
| Nominal Impedance | 6 Ohm |
| Power Requirement | 100 - 300 Watts |
| Finishes | Piano Black, Birdseye maple or any colour to order |
| Dimensions | 145 x 1300 x 410 mm (With feet 300 x 470) |
| Footprint | 145 x 410 mm |
| Weight | 45,5 kg |

WHAT IS DIAMOND AND TANTALUM AND WHAT MAKES IT SO UNIQUE?

THE DIFFERENCE BETWEEN ALUMINUM OXIDE AND DIAMOND

Diamond tops Mohs' scale with a hardness rating of 10, whereas the aluminum oxide, used in our C-series, is a 9 on the same scale. Although, one may think that there is not far between 9 and 10 on Mohs' scale, we measured the surface hardness on our diamond membrane to be 140 times harder than the surface on our aluminum oxide membrane.

NATURAL DIAMONDS

Diamond is carbon in its most concentrated form. Natural diamonds are rare and formed under extreme pressure deep under the ground. Pure diamond is pure crystalline bonded in an sp³ triangular structure, and it has a clear and glass-like appearance. For our diamond membrane, we use cultivated diamond equal to 1.5 to 3 carat of pure diamond, depending on membrane size.



CUTTING EDGE DIAMOND TECHNOLOGY

RAIDHO DIAMOND DRIVER CONE;

This graphite content gives the diamond layer a beautiful charcoal grey finish.

The application of diamond to our membranes has improved the membrane stiffness to an extent, where we push the first fundamental frequency outside the 20 kHz pass-band that we normally associate with audio reproduction. This means that the resonance peak (which is "only" 3 dB) is damped by more than 36 dB by the crossover. It also means that the resonance is moved way up in the frequency band, where the energy content in the music signal is almost non-existing. With diamond membranes, we are able to remove those last bits of material colorations, which emerge from inner material vibrations, completely. While the C-series already has become a reference point for resolution and for natural and live-like musical reproduction, the D-series just takes you that one step closer to the "real thing".

This graphite content gives the diamond layer a beautiful charcoal grey finish which also changes the visual appearance of our D and TD-series speakers.

THE NEW RAIDHO TANTALUM-DIAMOND (TD) CONE:

Even though our Diamond cone drivers, are already groundbreaking in their technology and performance, we still don't stop there – improving our technology is simply a part of the Raidho DNA.

With the new Tantalum technology, we have managed to better our already class leading diamond cones. By adding Tantalum to our ceramic cones, before the diamond layer, we have created a 5 layer sandwich cone, which is even stiffer than our already extremely stiff diamond cones, while at the same time adding huge amounts of inner damping.

This means that these cones move completely like a piston without any break-up nodes way above the human hearing limit. (Actually even higher than most high quality tweeters). What we gain from this is lower levels of distortion than any other drive unit on the market, lightning fast transient response, matching our world-famous ribbontweeters perfectly. The extremely low levels of distortion, also ensures a very musical and organic reproduction – bringing you closer to the music than you thought possible.

The technology in the TD-series represents the absolute pinnacle in the way of designing a cone for what we believe is the ultimate drivers.



TD Series

The new TD-series carries on the legacy of the highly acclaimed D-series, which has been well received all around the world from both reviewers and audiophile music lovers.

It was a big task to improve the series, but we took the serious approach and started from the beginning. We had an old idea about a new driver design, that would later prove to be superior to our previous design, so our design team came up with a completely new driver, based on a underhung system with a magnetic strength of 1.1 tesla, making it one of the most powerful in the world.

The new, patent pending design, made in-house, is built around a new and improved motor system, shaped like a turbine and with great attention to aerodynamics to remove any unwanted reflections and giving the cone optimal conditions. We use a new diaphragm with 5-layers, utilizing a combination of our Ceramix and Diamond-cones, but with added layers of Tantalum to make the cones even harder and stiffer. The inner damping is higher as well, making the new drivers sound more natural. The new driver is extremely efficient, resulting in a sensitivity that is much higher than the previous drivers.

New drivers also meant that we had to look at our already really good ribbon-tweeter, which is a Raidho-speciality. We managed to improve it as well by changing the rear chamber to remove unwanted reflections, and ended up with a tweeter with 3 dB higher sensitivity and no less than 35 dB lower distortion – and it was already very low. In combination with the new drivers, we achieved dramatic improvements in sensitivity in all the models.

With the changes made to the cabinets, to match the new drivers while still keeping the well-known design, careful attention to crossover-design and careful matching of the new drivers, made it possible to launch a new series of speakers that all follow the same sonic qualities – massive dynamics, high resolution and musicality.

Great attention has been paid to timing, correct phase and coherency. All the TD-models are optimal choices for any system, and they are extremely versatile. The high sensitivity makes them an ideal match to any amplifier, including tube-amplifiers with low output, and the new design and technology delivers all the details, dynamics and slam without any colorations, staying true to the music.

The new TD-series are advanced high-end-speakers, but this is not only about technology. This is about music and feelings, and listening to a TD-series speaker, you will experience all of the emotions of the music, embracing you with an authentic and organic sound that, in our honest opinion, is among the best.



TD1.2

Musical immediacy, resolution and dynamics like never before from a small speaker. Our new drivers sets the bar high and the TD1.2 is the one to beat with staggering performance wrapped in a very elegant and stylish look.



TD2.2

The TD2.2 takes the TD-series to the next level. As a compact floorstander, an additional driver for the low frequency makes the TD2.2 able to go deeper and deliver larger dynamics, while retaining the elegance of the TD1.2.



TD3.2

The beautiful looks of the TD3.2 holds a 3-way speaker that can deliver real life dynamics and authentic sound that is as live and authentic as the artist wanted it to be. This model has the power to surprise with both looks and sound.



D-Centric

The logical companion in a high-end home-cinema system is the D-centric. Built around our Diamond-drivers and our famous ribbon-tweeter, this beautiful speaker will match the demands of a good movie or concert.

| | |
|-------------------|---|
| Topology | 2 Way |
| Bass Loading | Bass reflex Port in rear, Impulse optimized |
| Drivers | 1 x Raidho TD Ribbon Tweeter 1 x 6,5" Raidho Tantalum Diamond mid/bass |
| Crossover Point | 2.4 KHz stepped slope |
| Frequency Range | 45Hz - 50 kHz |
| Sensitivity | 87dB |
| Nominal Impedance | 6 Ohm |
| Power Requirement | 25 – 125 Watts |
| Finishes | Piano Black, Walnut burl veneer or any colour to order |
| Dimensions | 200 x 360 x 360 |
| Footprint | 200 x 360 mm |
| Weight | 13 kg |

| | |
|-------------------|---|
| Topology | 2,5 Way |
| Bass Loading | Bass reflex Port in rear, Impulse optimized |
| Drivers | 1 x Raidho TD Ribbon Tweeter 1 x 6,5" Raidho Tantalum Diamond midbass 1 x 6.5" Raidho Tantalum Diamond bass |
| Crossover Point | 400Hz and 2.4 kHz stepped slope |
| Frequency Range | 32Hz - 50 kHz |
| Sensitivity | 88dB |
| Nominal Impedance | 6 Ohm |
| Power Requirement | 50 – 150 Watts |
| Finishes | Piano Black, Walnut burl veneer or any colour to order |
| Dimensions | 200 x 1055 x 520 mm (With feet 320 x 1150 x 520) |
| Footprint | 200 x 520 mm |
| Weight | 45 kg |

| | |
|-------------------|---|
| Topology | 3 Way |
| Bass Loading | Bass reflex Port in rear, Impulse optimized |
| Drivers | 1 x Raidho TD Ribbon Tweeter 1 x 5" mm Raidho Tantalum Diamond midrange 3 x 6.5" Raidho Tantalum Diamond bass |
| Crossover Point | 400Hz and 2.4 kHz stepped slope |
| Frequency Range | 28Hz - 50 kHz |
| Sensitivity | 90dB |
| Nominal Impedance | 4 Ohm |
| Power Requirement | 50 – 300 Watts |
| Finishes | Piano Black, Walnut burl veneer or any colour to order |
| Dimensions | 200 x 1235 x 520 mm. (With feet 320 x 1320 x 520) |
| Footprint | 200 x 520 mm |
| Weight | 55 kg |

| | |
|-------------------|---|
| Topology | 2,5 Way |
| Bass Loading | Internal vented design. Port in rear |
| Drivers | 1 x Raidho Ribbon Tweeter 1 x 6.5" Raidho Diamond midrange 1 x 6.5" Raidho Diamond bass |
| Crossover Point | 150Hz and 3 kHz 2nd Order |
| Frequency Range | 80Hz - 50 kHz |
| Sensitivity | 87dB |
| Nominal Impedance | 4 Ohm |
| Power Requirement | 50 – 150 Watts |
| Finishes | Piano Black, Walnut burl veneer or any colour to order |
| Dimensions | 200 x 1550 x 600 mm. (With feet 440 x 1580 x 600) |
| Footprint | 200 x 600 mm |
| Weight | 21 kg |



TD3.8

The TD3.8 is our beloved beast. The first midsize Raidho-speaker with bigger drivers, and what a fun one, it is.

The TD3.8 is built around two of our new 8" drivers with our new patent pending motorsystem shaped like a turbine. The drivers are capable of reproducing stunning dynamics and as the TD3.8 is a full-range system reaching down to 23 Hz, this speaker will entangle you in the roots of the music, full of authentic, real-life dynamics that is as live and engaging as going to a concert.

The midrange is handled by two of our new drivers as well, and this time as a 5,25". They are placed around the new TD-ribbon tweeter, and the TD3.8 benefits from the same details as the rest of the new TD-line – lower distortion and a broadband performance that reveals every layer of music to you, the listener. The new drivers are practically free from distortion, and it pays out, and not just in measurements.

The TD3.8 is built in a completely new-designed enclosure that matches the look of the other Raidho-models. With careful attention to airflow, we have given the drivers the ability to move freely without any interference from the inside, being from the drivers or the enclosure it self. The massive crossover is placed in the bottom, and all acoustical treatment inside the TD3.8 is carefully measured and matched for absolute performance.

The TD3.8 is the one to beat in this class. The power and magnitude is equally matched with timing, phase and coherency in a full-range design that is musically authentic, real and extremely convincing. Audition the TD3.8 and discover what you have been missing....



| | |
|-------------------|--|
| Topology | 3 Way |
| Bass Loading | Bassreflex. Port in rear Impulse optimized |
| Drivers | 1 x Raidho TD Ribbon Tweeter 2 x 5" Raidho Tantalum Diamond midrange 2 x 8" Raidho Tantalum Diamond bass |
| Crossover Point | 400Hz and 2.4 kHz Stepped slope |
| Frequency Range | 24Hz - 50 kHz |
| Sensitivity | 89dB |
| Nominal Impedance | 6 Ohm, min. 4 Ohm@120Hz |
| Power Requirement | 50 – 300 Watts |
| Finishes | Piano Black, Walnut burl veneer or any colour to order |
| Dimensions | 440 x 1420 x 610 mm. |
| Footprint | 440 x 610 mm |
| Weight | 75 kg |



TD4.2

Combining the superb drivers from the highly acclaimed TD4.8, but building on the smaller enclosure of the D4.1, the TD4.2 is designed to act like a line-array speaker utilizing a 7-driver speaker with the new, in-house built Tantalum Diamond-drivers and the new, updated TD ribbon tweeter which excels with higher sensitivity and an impressive low level of distortion.

TD4.2 is closing the gap to the TD4.8 and is capable of filling larger rooms with impressive sound achieved from careful tuning of the enclosure and built around a high quality crossover using selected components of extreme quality. The enclosure is bass-reflex, and the sensitivity of the TD4.2 makes them a great choice no matter which amplifier is used.

The beautiful aesthetics of the TD4.2 is followed by a sound that is carefully tuned to deliver optimal phase-response and with great attention to timing and musicality. The sound is authentic and live, and TD4.2 will deliver musical experiences from the smallest, intimate performances and to the biggest bands, with impact, dynamics and musical scale in the most convincing of ways.



| | |
|-------------------|---|
| Topology | 3 Way |
| Bass Loading | Bass reflex. Port in rear, Impulse optimized |
| Drivers | 1 x Raidho TD Ribbon Tweeter 2 x 5" Raidho Tantalum Diamond, midrange 4 x 6.5" Raidho TantalumDiamond, bass |
| Crossover Point | 400Hz and 2.4 kHz stepped slope |
| Frequency Range | 25Hz - 50 kHz |
| Sensitivity | 88dB/W 2.83V/m |
| Nominal Impedance | 6 Ohm |
| Power Requirement | 50 – 300 Watts |
| Finishes | Piano Black, Walnut burl veneer or any colour to order |
| Dimensions | 200 x 1550 x 600 mm. (With feet 440 x 1580 x 600) |
| Footprint | 200 x 600 mm |
| Weight | 64 kg |



TD4.8

The TD4.8 is our flagship TD-speaker. Built in a stunning scandinavian design that will fit all rooms, this tall speaker is designed as a full-range speaker using our in-house made Tantalum Diamond-drivers with no less than 6 bas-drivers and 2 midranges.

Together with the upgraded TD-ribbon tweeter, this impressive speaker delivers world class musical experiences that captivates the listener with a huge sound-stage capturing the atmosphere and intimacy of your recordings.

Placed on big, adjustable feet with built-in decoupling, the TD4.8 will make the best out of any room with the stunning looks, and the sound is fast, coherent and authentic. The TD4.8 was appointed the "Cost-no-object speaker of the year 2018" in Hi-Fi+, and it is a testament to all musiclovers.



| | |
|-------------------|--|
| Topology | 3 Way |
| Bass Loading | Bass reflex. Port in rear, Impulse optimized |
| Drivers | 1 x Raidho TD Ribbon Tweeter 2 x 5" Raidho Tantalum-Diamond drivers 6 x 6.5" Raidho Tantalum-Diamond drivers |
| Crossover Point | 400 Hz & 2.4 kHz Stepped slope |
| Frequency Range | 21 Hz - 50 kHz |
| Sensitivity | 90dB |
| Nominal Impedance | 4 Ohm |
| Power Requirement | 50 - 300 Watts |
| Finishes | Piano Black, Walnut burl veneer or any colour to order |
| Dimensions | 200 x 1790 x 630 (With feet 440 x 1790 x 615) |
| Weight | 71 kg |



D5.1

A good big one will always beat a good little one – as the D5.1 so ably demonstrates. For the flagship D5.1 we developed the largest Diamond drivers yet – and then we used four of them in each speaker, with pairs deployed in separate dedicated enclosures to create a modular cabinet system capable of delivering unprecedented low-frequency clarity and speed, natural tonality and texture. It's the foundation that allows the D5.1 to bring performers and their performance to life; that reproduces the energy from a bowed double bass or the crisp snap of a snare drum; the searing edge of a scintillating guitar solo or the whisper of the most intimate vocal; that lets you feel the music as well as hear it. The legendary Raidho planar tweeter and a pair of dedicated Diamond midrange drivers, mounted in their own dedicated, resonance controlled cabinet, are able to sing like never before, the focussed seven driver, symmetrical array delivering perfect time and phase integration. It might look like a large and super sophisticated loudspeaker, but at Raidho we prefer to think of our flagship as a musical time machine. Choose a concert – any concert – and the D5.1 can take you there.



| | |
|-------------------|---|
| Topology | 3 Way |
| Bass Loading | Internal vented design. Port in front |
| Drivers | 1 x Raidho Ribbon Tweeter 2 x 5" Raidho Diamond, midrange 4 x 8" Raidho Diamond, bass |
| Crossover Point | 200Hz and 3 kHz 2nd Order |
| Frequency Range | 25Hz - 50 kHz |
| Sensitivity | 90dB/W 2.83V/m |
| Nominal Impedance | 6 Ohm |
| Power Requirement | 100 – 400 Watts |
| Finishes | Piano Black, Walnut burl veneer or any colour to order |
| Dimensions | 250 x 1950 x 680 mm. (With feet 440 x 2085 x 815) |
| Footprint | 605 x 815 mm |
| Weight | 165 kg |

Rack

The Raidho Rack is a dedicated stand and shelving system for your music components.

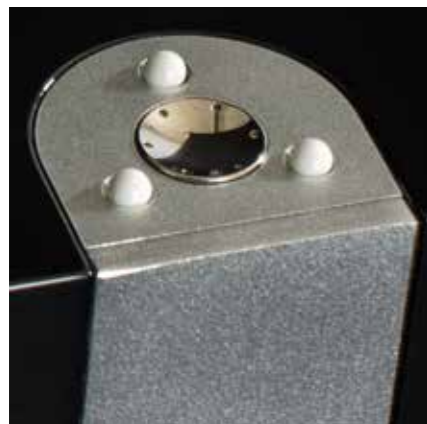
The Raidho Rack system combines the best Scandinavian tradition for furniture design with Raidho's unique and long tradition for vibration and resonance control to form a beautiful and stylish shelving system for your music components.

While supporting your equipment the Rack system simultaneously work as an efficient mechanical grounding of your components, thus improving the performance and extracting the full potential of your audio/video devices.

The shelves can be used singularly as a dedicated amplifier stand, or be combined into a complete rack system.

DIMENSIONS

| | | |
|----------------|-----------|-----------|
| Width external | A & B | 70,5 cm |
| Width inside | A & B | 62,8 cm |
| Dept | A & B | 49 cm |
| High external | A 12,4 cm | B 25,2 cm |
| High inside | A 8,7 cm | B 21,5 cm |



“Paying eleven grand for two mid-bass drivers sounds like insanity on stilts... until you you hear them. It’s a bewildering, fascinating, brilliant take on an upgrade on an already fantastic loudspeaker. It shows just how a drive unit more than 100 times stiffer than the original can massively change a loudspeaker design.”

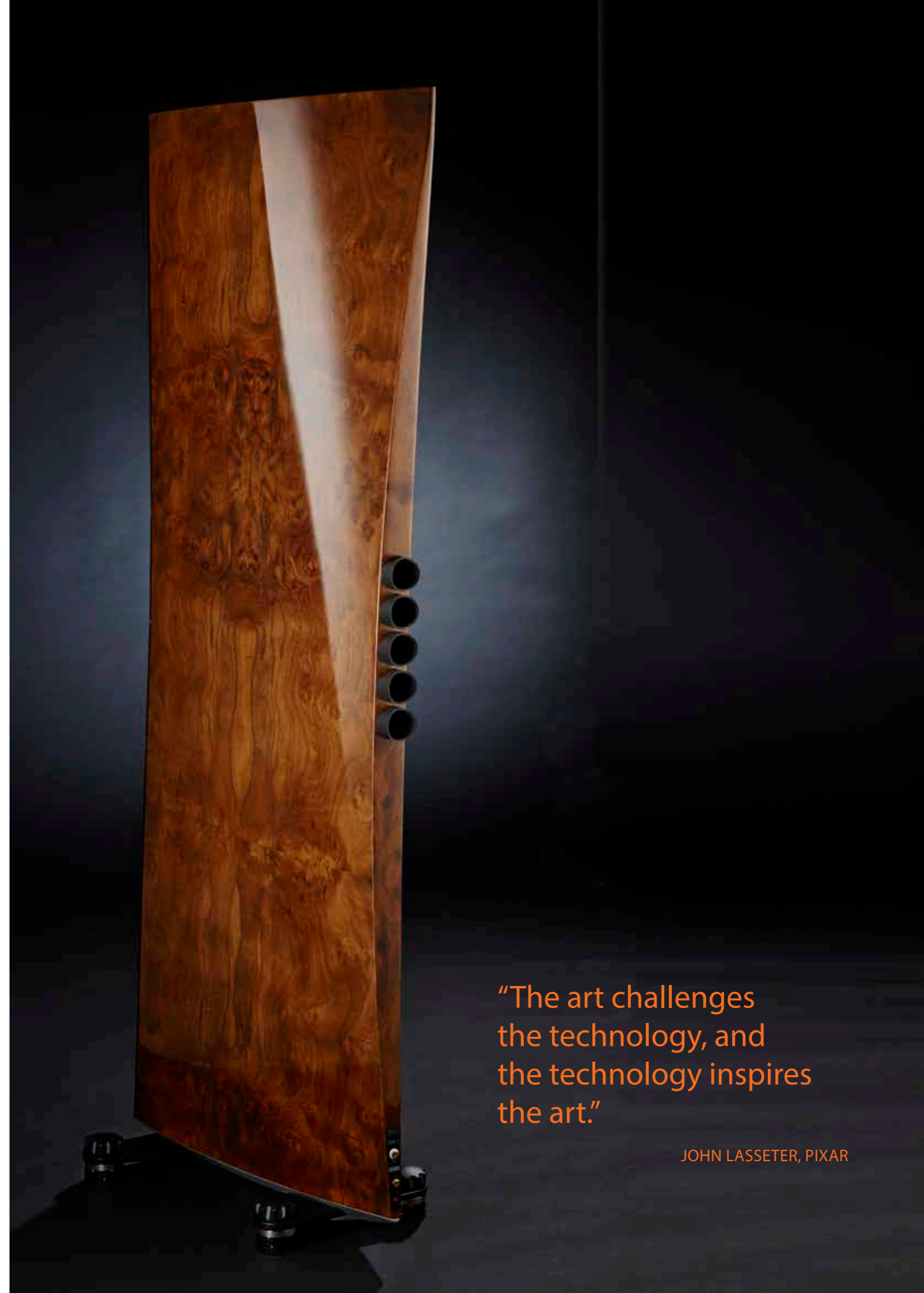
ALAN SIRCOM, HI-FI+

“The great task in life is to find reality.”

IRIS MURDOCH

“The art challenges the technology, and the technology inspires the art.”

JOHN LASSETER, PIXAR





Raidho
Acoustics

2021